



Data Concentrator Unit / Data Gateway



MODEL - DCU1000UE

About the ICD -DCU1000UE

ICD DCU 1000 is an advanced Data Concentrator/ Data Gateway that enables Data collection from Standard MODBUS-RTU Slaves Energy Meters/ Instruments and transfers the data to Servers / Client PC networks.

15+

Countries Served

5000+

Happy Clients

40+

4 Decades in Industry

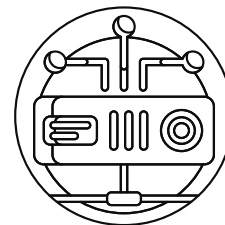
The Modbus RTU Slave settings and register address mappings can be downloaded into the device through menu-driven, user-friendly, and **Windows-based** software.

Apart from collecting the data from Modbus slaves, It Reads other formats from Digital I/O (4 Channel) and Analog Inputs (2 Channel) are also available as an optional feature.

All the above features make the data concentrator as an ideal device to be used in substation monitoring systems, Numeric relays, Multi Function Meters, Annunciators, and various data collection systems using DCU 1000.



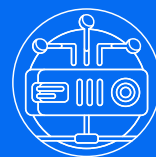
MODEL - DCU1000UE



TYPE	: DATA CONCENTRATOR
MODEL	: DC1000UE
DISPLAY	: 2 Row x 16 Character LCD with backlit
CHARACTER SIZE	: Min. 4.35(H) x 2.95(W) mm
NO. OF COMMUNICATION INPUT PORTS	: 1 No's Optically Isolated RS485 Port / 2 No's Optically Isolated RS485 Port
NO. OF RTU SUPPORTED	: COM Port-1 (Supporting 30 RTU) / COM Port-2 (Supporting 30 RTU)
TYPE OF PROTOCOL INPUT	: MODBUS-RTU
RTU BAUD RATE	: 4800 / 9600 / 19200 /115200 bps (Selectable)
MAXIMUM DISTANCE OF COMMUNICATION FOR RTU	: Up to 1000 Meter
NO. OF COMMUNICATION OUTPUT PORTS	: 1 No Single Ethernet Port / Dual Ethernet Port
TYPE OF PROTOCOL OUTPUT	: MODBUS TCP/IP
LCD POWER SAVE MODE	: Provided when no key is operated for 3 minutes the LCD Backlit is switched OFF to save power and to enhance the life of LCD. The backlit is switched ON when any key is Pressed
PARAMETER DISPLAYED	: Communication status None/Fail/Good is displayed

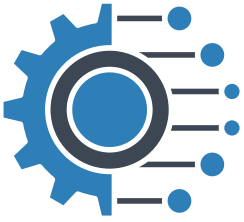


KEY FUNCTIONS



KEY PAD	5 Keys namely Fun, Shift, Increment, Enter and Mode used for Program mode setting and Run mode selection
PROGRAM MODE PARAMETERS	Device address and RTU configurations
UNAUTHORIZED PERSON ENTRY PROTECTION	Provided through Password Facility
SETTING AND STORAGE	EERAM
COMM. INDICATION	4 sets of RXD and TXD LED's are provided for each Communication Ports to indicate the traffic status
COMM. NETWORK TYPE	Multi-drop Configuration
ISOLATION OF DEVICE FROM THE NETWORK	Provided, Isolated during Power and Device failure
AMBIENT TEMPERATURE	45 - 55°C
AUXILIARY POWERSUPPLY	90 - 265V AC
BOX DIMENSION	150(W) x115 (H) x54 (D) mm
ENCLOSURE	Powder coated Aluminum Case
MOUNTING	Din Rail
WEIGHT	550gms (Approx)





Unique Product Features

- Can Connect 30/60 Instruments
- High-Speed Data Delivery
- Field Programmable (Parameter Wise & Instrument Wise)
- Can Integrate Energy Meters, Water / Steam Flow Meters, Air Flow Sensors, PID Controllers, Gas Sensors, Process Controllers & PLC
- Single & Dual Ethernet Output Options Available

Applications



Energy Management System



Process Monitoring System



IOT Application Interface



Ethernet Protocol Data Conversion Application



Energy Billing System




Building Management System





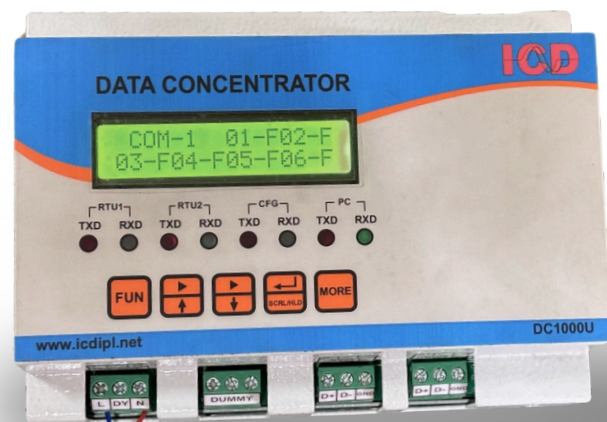
Industrial Controls and Drives India Pvt. Ltd. (ICDIPL)

 044 2378 0053

 sales@icdipl.net

 www.icdipl.net

 33, Mettukppan Road, Maduravaoyl,
Chennai - 600 095, Tamil Nadu India



MODEL - DCU1000UE